

Installing Architecture Computing Resources

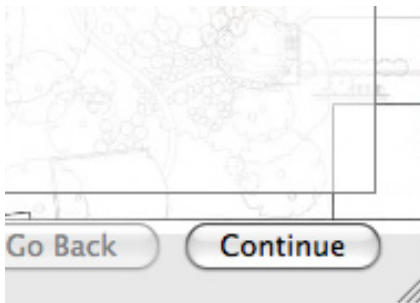
For OS X Tiger



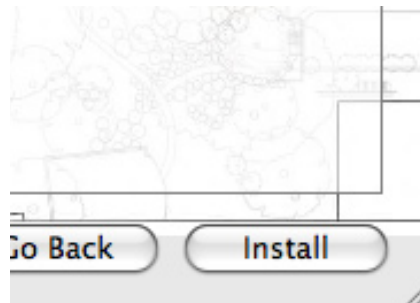
This installer will set you up to use the printers and plotters in the school, network drives to find and store information, useful computing links, and color matching tools for more exact printing.

You can download this installer with your web browser at <http://www.arch.virginia.edu/computing/docs/>

Download, double click it, and double click the A-School Network Setup drive that appears on your desktop.



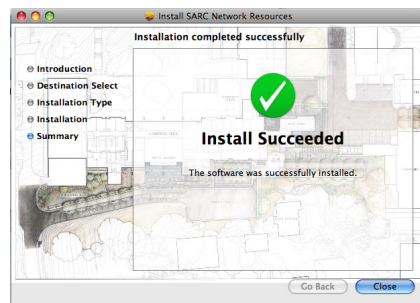
1. Click Continue.



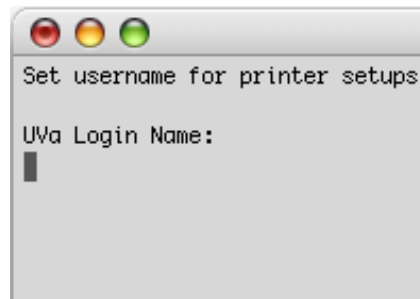
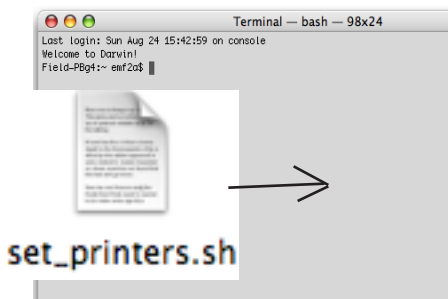
2. Click Install.



3. Enter your laptop user name and password you use when you install a program.

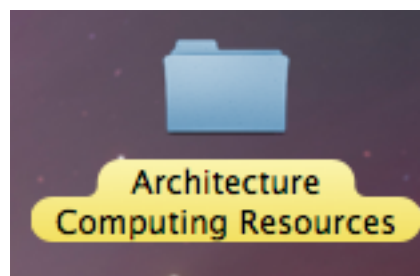
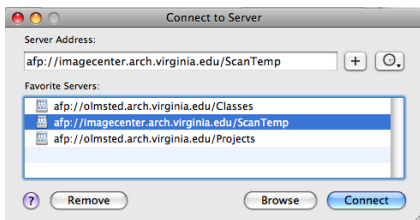


4. Click close.



5. Find the `set_printers.sh` file and drag it to the open Terminal window.

6. Hit enter, then follow the instructions. Restart when it is complete.



7. You can connect to the school's servers by clicking Go -> Connect to Server.

8. You have some useful links and a document on color matching on your desktop.

NOTE: When you connect to printers, you must authenticate by typing ARCH[your a-school ID] and then the password. Connecting to servers does not require typing ARCH\ first.

NOTE ALSO: You may need to restart to see and use school printers.